

# EUREKA EXPRESS

VOL XXXIV No. 3 Circ 295

MARCH 2013

## Ladies Night

7:30pm, 24<sup>th</sup> May 2013, Eureka Hall



**Full Details Inside**



## EDITORIAL

Hi everybody

Well since I slipped up this month and couldn't convince anyone to do the editorial I guess it was up to me to provide the print—I did learn that not being organised has repercussions! Lesson learnt I already have someone confirmed for next month.

Firstly I would sincerely like to thank all the people I ring every month for contributions for the editorials.

I know (from Experience) that we can't all be Journalist's and don't find it easy either writing about ourselves or anything else. Be comforted by the fact that we all feel the same. However if everyone takes their turn then you will only do this a couple of times in your lifetime in Eureka— that doesn't sound so bad does it!

Comments coming back to the Eureka Express committee tell us its worth it!

For me personally, I have lived on the boundary of Gordonton and Eureka for many years. Waverley Road wasn't named when we first arrived - we were in no man's land, but how times have changed.

Our children were educated at Eureka school and biked the 6 kms to school there were very few cars in those days- Now our grandchildren go to Newstead and Tauwhare Schools and travel by car- I would hate to see them biking on those same roads now

We've seen so many changes with time passing so fast- it's amazing how quickly we adapt to our new changing environment.

Our fellow city dwellers that move into the Eureka district need to be involved and we will all benefit together. We need to nurture and encourage our new lifestylers to join in.

The editorial is one way of doing this, so when the phone rings and its Lin speaking, please take the bull by the horns (so to speak) and give it a go. Include the family, they will all have something to contribute whether it be personal or comments we will appreciate your efforts.

To the children in the district we would love to publish your articles so get Mum and Dad to send them in.

Until next month many thanks to you all

Take Care

Lin



## SNIPPETS



**EAST HAMILTON NEIGHBOURHOOD SUPPORT:** You may, or may not, already be part of a Neighbourhood Support Group on your road or in your area. If not, and you are interested perhaps in forming a group or in receiving the weekly police email, please register your interest by phoning 858 6211 (ask for East Hamilton Neighbourhood Support) or email: [east@nshamilton.org.nz](mailto:east@nshamilton.org.nz)



The weekly newsletter is very informative in regard to security tips, the latest in scams, and areas that burglars are currently targeting.

**WELCOME TO EUREKA TO:** Gary and Fiona Genders who are new arrivals on Tauwhare Road, having bought Graham and Stephanie Timms' home. Gary and Fiona have "escaped" from Auckland, where their three adult children still reside. A warm welcome to you both. Phone 824 1885

CPR

CPR

CPR

**Preliminary Notice: Mark your calendars**

A CPR tuition night will be held in the Hall  
on Monday 10 June. All ages welcome.

Details next month.



## EUREKA EXPRESS

ADVERTISING RATES		CONTACTS – Gail or Gayle	
<b>Classified Advertisements</b>	<b>Free</b>	<b>Gail Mayall (Editor)</b>	<b>Gayle Orr (Treasurer)</b>
<b>Small Business Advertisements</b>	<b>\$10 / month</b>	<b>70 Eureka Road</b>	<b>1139 SH26</b>
• x 10 insertions	<b>\$80 / year</b>	<b>Ph 8241 758</b>	<b>R D 6, HAMILTON 3286</b>
<b>One Third Page Advertisement</b>	<b>\$15 / month</b>	<b>Fax 8241 028</b>	<b>Ph 8241 713</b>
• x 10 insertions	<b>\$120 / year</b>	<b>e-mail:</b>	<b>e-mail: <a href="mailto:eorr@xtre.co.nz">eorr@xtre.co.nz</a></b>
<b>One Half Page Advertisement</b>	<b>\$20 / month</b>	<b><a href="mailto:editor@eurekaexpress.co.nz">editor@eurekaexpress.co.nz</a></b>	
• x 10 insertions	<b>\$160 / year</b>		

# Ladies Night

7:30pm, 24<sup>th</sup> May 2013, Eureka Hall



After the success of the Ladies Night in 2012 it has been decided to hold another one!

All the popular stalls from last year will be back **PLUS** more, including:

- Tupperware
- Avon
- Jewellery
- Lorraine Lea Linen
- Zee Zee Merio children's clothing
- Intimo Lingerie
- Rawleighs

## All Ladies Welcome

You will receive a complimentary glass of wine on arrival and there will also be some finger food available.

Everyone that shows up goes in a free draw to win prizes from our stall holders, there will be 1 prize from each supplier so you have good chance to go home with a prize.

This is an evening for ladies - free from husbands and children! There is no pressure to buy so just come along and enjoy and night out!

**Bring A Friend, Or Two, OR Even  
Three For A Great Night Out**

## TAUWHARE INDOOR BOWLING CLUB

Welcome to the Club's news and welcome to Lizz Coaton, Chris Olsen and John Bargh who have become members of our club.

Our first Open Triples Tournament was an enjoyable night, and thank you to all members for making it a success. Special thanks to Jessie, Mellita and Daniel for playing and filling in the vacant spots in our Tauwhare teams. At the 11<sup>th</sup> hour there was a choice of having a "bye" in each round, or withdrawing one of the Tauwhare teams. Both options were undesirable and finding three extra players was awesome.

B Meads and B McNally playing in Waikato's Bettridge Shield team (Ladies Top 12) at Rotorua against Tauranga and Bay of Plenty. Victory went to Waikato.

Bev and Bronwyn are playing in Eastern's Grupen Cup this season.

From the records - *The Mulholland Trophy was donated by Bert and Joy Mulholland in 1959. Traditionally, the trophies were Pork and were presented on the evening of the competition. Bert was the Club's first Secretary (Committee meeting 24.3.54).*

*Fred Hansen, also a Foundation member, presented the Triples Trophy to the Club in 1979. Fred was granted Life membership in 1982.*

### **Results:**

#### **21<sup>st</sup> March 2013 - Club Night**

- Winners B Meads, R Bargh, B McNally
- Runners Up R Arnold, G Mayall

#### **28<sup>th</sup> March 2013 - Mulholland Trophy**

- Winners J Hooper, Glenda Goodare
- Runners Up R Arnold, G Mayall

#### **4<sup>th</sup> April 2013 - Triples Championship**

- Winners J Arnold, C McNally, G Mayall
- Runners Up J Hooper, B McNally, J Cottle

#### **11<sup>th</sup> April 2013 - Open Tournament**

- Winners G Membery, J Logan, A.M Richards
- Runners Up M Greenwood, G Greenwood, D Baker

### **Up Coming Events**

- 9<sup>th</sup> May 2013 Club Night
- 16<sup>th</sup> May 2013 Pairs Championship
- 23<sup>rd</sup> May 2013 Open Triples Tournament - A plate please
- 30<sup>th</sup> May 2013 Club Night
- 6<sup>th</sup> June 2013 Esme Pope Memorial

### **Out and About**

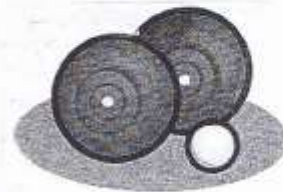
#### **15<sup>th</sup> April 2013 - Puketaha Open Tournament**

- Winners J Hooper, Jim Bargh, R Coxon, K Williams

Sadly Tauwhare lost the Brown Bowl to Matangi. It was close!

**'Til next month - Good bowling everyone**

**Robin Bargh** - Phone 824 1819



## UPCOMING BOARD OF TRUSTEES ELECTION

### TAUWHARE SCHOOL

#### Board of Trustees Election

Nominations are invited for the election of 5 parent representatives to the Board of Trustees.

A nomination form and a notice calling for nominations will be posted to all eligible voters.

Additional nomination forms can be obtained from the school office.

Nominations close at noon on **16 May 2013** and may be accompanied by a signed candidate's statement.

The voting roll is open for inspection at the school and can be viewed during normal school hours.

There will also be a list of candidates' names, as they come to hand, for inspection at the school.

Voting closes at noon on 30 May 2013.

Signed Paula Brown  
Returning Officer



## RAINFALL

	March 2013	Year to 31 <sup>st</sup> March
Total (mm)	36.5	73.5
Average (1994-2013)	74	226
Difference	-37.5	-142.5

Rainfall recorded on 5 days.

#### Comparison of 2008 and 2013

Rainfall each month in mm

Year	January	February	March	April	May
2008	3	12	29	146	158
2013	17.5	19.5	36.5	111 to 25th	?



# LADIES A PLATE

## FELJOA AND APPLE CRUMBLE

### Ingredients

#### CRUMBLE:

75g butter, diced  
1/2 cup flour  
1/4 cup coconut  
1/4 cup rolled oats  
1/2 cup soft brown sugar

#### FRUIT BASE:

12 feijoas, peeled and sliced  
2 apples, peeled and sliced  
1/4 cup sugar



### METHOD:

1. Preheat the oven to 180
2. To make the crumble place all ingredients into a food processor. Blend or pulse until combined.
3. Place the fruit in a soufflé or baking dish. Sprinkle over the sugar. Top with the crumble mixture. Bake for 35-40 minutes, until crumble is crisp and golden.

## SPICED FELJOA CAKE

120g Butter  
180g Sugar  
1/2 cup Sultanas  
2 eggs  
180g Flour  
1 tsp baking powder  
1 tsp Baking Soda  
1 tsp Cinnamon  
1/2 tsp Mixed Spice  
1 1/2 cups, peeled and sliced feijoas.

Cream the butter and sugar until light and fluffy. Add the sultanas. Add the lightly beaten eggs and beat well. Sift the dry ingredients together then add to butter mixture add the feijoas and mix gently. Place in a prepared tin and bake at 180 for 50-60 minutes. When cold dust with sieved icing sugar.





## IN YOUR GARDEN

Rain, glorious rain, but please sir can we have some more? I was digging around in the veggie garden this afternoon and was amazed at just how dry the ground still is. Those of you who had managed to mulch your garden during spring/early summer, will be so pleased you made the effort and you will find the autumn growth of weeds so much easier to deal with.

Once this present spell of rain is over, it is imperative that you give your citrus trees a copper spray and a good dose of citrus fertilizer. It is also the best time to plant new citrus trees while the soil is still warm and moist.

Pull out summer crops that have finished and recondition the ground with compost or fertilizer.

Plant your winter garden now. You should already have in carrots, and parsnips should be well established, although it's not too late. Plant seedlings of cabbage, cauli, broccoli, silver beet, Brussels sprouts, celery, leeks, spinach and lettuce. Pumpkin and Squash are ready for picking. Ripe pumpkins have good colour, a hollow sound when knocked lightly and a hard shell-like skin. Cut fruit off vines leaving a 10cm "handle" and store them in a dark airy place after curing in the sun for 2 weeks.



Refrain from touching your roses. They need to be left to rest in order to grow "hips" don't start pruning until the end of June. Cut back perennials and spring flowering shrubs need a good trim now. Prepare the ground with rich compost and slow release fertilizer for planting of spring bulbs. Daffodils, Erlicheer, Tulips, Ranunculars, Anemones to name a few.

Winter protection. Even though the weather has still been mild, we have seen the first hint of Jack Frost. It won't be long before we are wearing an extra layer to protect ourselves from the cold, but what about those tender plants in the garden which need to be covered with frost cloth or you can now spray with Vaporgard, which is an organic product that gives 3degrees of protection.

All in all there's plenty to be done before you can put your garden to bed for the winter, so happy gardening, Jennifer.



**SPYVES PANEL SHOP**  
for all  
Panel and paint requirements



**AUTOBOT CHASSIS**  
and  
**ALIGNMENT MACHINE**

Ph Ron or Karen 8241 890  
Fax 8241 892  
Mob 027 280 0346

*Jo Stockley* *Just ask!*  
**ADMIN PRO**

- Local Accounts & Office Support
- Your office or mine!
- Over 20 years experience

- ✓ Invoicing
- ✓ Accounts payable
- ✓ Credit management
- ✓ Bank reconciliation
- ✓ GST / PAYE
- ✓ Payroll



Ph: 07 8295829 Mob: 027 6950576  
E: jo@adminpro.co.nz

**COMPUTERISED  
BULK SPREADERS LTD**  
Cartage & Spreading



**FERTILIZER, LIME, UREA  
SPECIALISTS**

Competitive Rates

**PETER JONES**

027 496 3370 07 887 4000

26 years service in the  
Morrinsville district

**EUREKA  
POULTRY FARM**

13 Hooper Road

Ph 824 1762

**NIC & MARIA STOLWYK**

**Hobby Hens**



Young pullets from  
5 weeks to point-of-lay  
Great for lifestylers  
Bagged up chook manure  
Hours Mon-Sat 8-6

**Lawn Mowing  
And  
Gardening Services**



**Maurice Smith**

For free no-obligation quote:

Ph: (07) 8241948 Mobile: 0274797282

Email: [mfsmith@clear.net.nz](mailto:mfsmith@clear.net.nz)

*Ride-on mowing specialists.  
Give your lawn the perfect finish*

*The Beauty House  
& Gift Shop*



*Friendly, personalised service  
Great prices for all your beauty  
needs & a fantastic range of gifts*

**PHONE FOR AN APPT NOW**

(EFT-POS available)

Jacqueline Jones

1092b Tauwhare Road

Tauwhare Village

P: 07 8240950 M: 0274 853985

E: [thebeautyhouse@xtra.co.nz](mailto:thebeautyhouse@xtra.co.nz)



*Hair With Ease*

YOUR MOBILE SALON

Women's Cuts  
Colours/Foils  
Kid's Cuts  
Men's Cuts  
Eyelash Tinting  
Eyebrow Tinting

*Call Nicola For Appointments*

PH: 0275580583

EMAIL: [NICOLA@HWITHEASE.CO.NZ](mailto:NICOLA@HWITHEASE.CO.NZ)

FRESH  
APPLES & PEARS  
STONEFRUIT IN SEASON



**NEWSTEAD ORCHARD**  
552 Morrinsville Road

OPEN MON-SAT,  
W J McMilken & Co  
Morrinsville Road  
Tel. 856 4478



**TAUWHARE HOME KILLS**

**TREVOR & LEONIE BRUNTON**

1126 TAUWHARE ROAD

PH: 07 824 0880

Fx: 07 824 0809



**Gayle Orr**  
 Spiritual Counsellor & Teacher  
 Working with angels to relay  
 Messages from loved ones  
 Personal Readings  
 Healing  
 Spiritual Counselling  
 Meditation & Relaxation Classes

**For a personal reading  
 phone: 07 824 1713**

**ROSS PUMPS**  
 &  
 Filtration Specialists Ltd



Servicing and installation  
 On all types of pumps  
 Full Water Treatment  
 Service Available

**DAREN ROSS**  
 Tel. 8241 726 or 0274 346 571  
 Fax. 8241 879

**CALF COVERS**  
 "Canvas, Jute, or satin  
 lined for Calf Club"

I also manufacture horse covers, trailer covers or any other kind of cover you may want. Good quality, P.V.C. horse gear bags — can also be used for dive bags. Good quality at reasonable prices.

**Phone Narelle Pollock  
 824 0736**



**CAMBRIDGE  
 CARPET  
 CLEANING**  
*Servicing the Waikato*

**Also**

- ✓ Upholstery Cleaning and Protection
- ✓ Flood Restoration
- ✓ Stain Treatment
- ✓ Auto and Marine Work
- ✓ Window Cleaning
- ✓ Senior Citizens Rates

**Phone Grant on 0275 542 116  
 Or 07 823 7031**  
**Locally Owned and Operated**

**Local builder  
 Tauwhare Road resident  
 Registered Tradesman**



- Concrete work
- New homes
- Renovations
- Alterations
- Farm buildings
- Decks
- Fences
- Bathrooms
- Kitchens
- Roofing

**30 years building experience**

**Craig Griffin Builders Limited**  
 Phone Mobile: 027 279 2682  
 Phone/Fax After Hours: 824 1607  
 Email: craigandjackiegriffin@ihug.co.nz

**nzgardensheds**  
*The best little Sheds around!*

Your local garden shed supplier of NZ made, self assemble Garden Sheds (Zincalume or Colour Steel)

**GET IN TOUCH...**

- \* EASY ASSEMBLY
- \* MADE TO LAST!

**Waikato Shed Company**  
 218 Hunter Road, Eureka,  
 Hamilton  
 Phone: 07 824 1045  
 Email: sales@nzgardensheds.co.nz

**EQUIRE FOR A BROCHURE NOW**

**Residential  
 Interior Design**

- Colour schemes and advice
- Home organization ideas
- Maximise interior space and use
- Personalise your home



**Phone Leanne Hilder  
 07 889 6646 or 021 911 621**  
 Email: leanne.hilder1@gmail.com

**Scanlan & Jones**

Specialists in:

- ✓ Wood Fire Sales
- ✓ Wood Fire Installation/Repairs
- ✓ Hearth Manufacturers
- ✓ Outdoor Fire Installations
- ✓ Chimney Sweeping
- ✓ Heat Transfer Kits — Sales & Installation



Registered Installers  
 Over 17 Years Experience  
 Free Quotes

**Contact Justin & Brendon  
 0274 834 267 (day)**

A/Hrs: 07 824 0950 Fax 07 824 0951  
 Email: scanlan.jones@xtra.co.nz

Member of New Zealand Heating Association 

**HAIRFIELDS**  
 HAIR DESIGN  
 95 HOOPER ROAD  
 Sharon Laurent

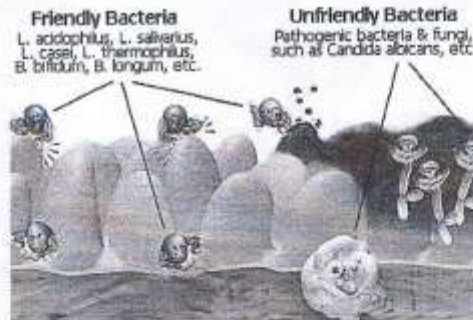
Full salon facility in Eureka  
 Total hair care professional  
 with many years experience  
 Agent for Nutrimetics also



Open Tuesday to Thursday  
 Late nights Tues/Thurs  
 Tel. 824 1712 or 027 280 5978



# Probiotics



Probiotics are the necessary bacteria we all need to break down your food so it can be used by your body and also for a fully working immune system.

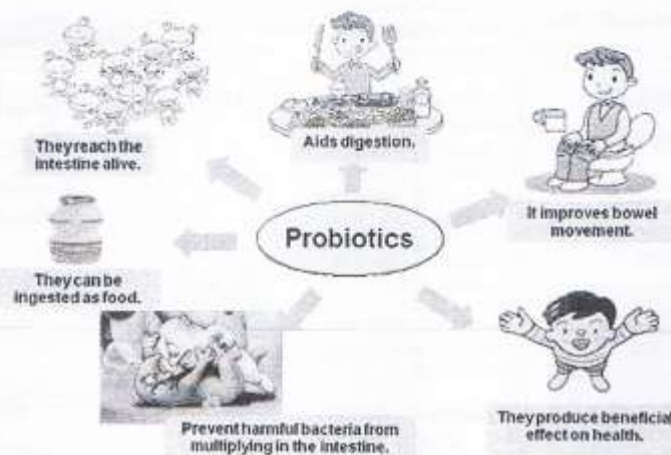
If these bacteria are missing in our intestines (due to antibiotics, medications, stress, poor diet or food preservatives etc.) it may contribute to health issues such as bloating, digestive problems, colic pain, reflux, oral or vaginal thrush, chronic flatulence, nappy rash, low immune problems etc.

There is about a kilogram of different types of bacteria lining your small intestines. These bacterial are necessary to breakdown your food. Once in your small intestine, these bacteria recolonise and multiply. Should you have any of these nine bacteria missing, it can cause digestion, immune system, food allergies and other health problems.

A good quality probiotic supplement is safe and effective to help restore and maintain a healthy bacterial balance population in our intestinal tract.

Yoghurt is a good maintenance source or you can also get a small shot called YAKULT at your supermarket.

Probiotic means 'for life', showing how important they are in supporting our quality of life.



Let our food be our medicine, and our medicine be our food.

By Cheryl McFarlane

## Newstead Veterinary Services

Ph. 856 4522 [enquiries@newsteadvets.co.nz](mailto:enquiries@newsteadvets.co.nz)  
[www.newsteadvets.co.nz](http://www.newsteadvets.co.nz)



### Flip the Lip on Your Pet's Teeth

#### *May is Dental Month at Newstead Veterinary Clinic.*

Periodontal disease is a common and preventable dental disease in our pets. It is a painful inflammatory condition involving bacteria attacking the gums, ligaments and bony tissues which surround and support animal's teeth. It is a progressive disease, which means that the symptoms will become worse if left undetected. Dental disease has other, more significant consequences than just 'bad breath'. Severe periodontal disease can cause discomfort and can be very painful at times.

#### How do I know if my pet has periodontal disease?

They can show varying signs of disease including:

- ✓ Bad breath
- ✓ Tartar on teeth
- ✓ Red and swollen gums
- ✓ Pain or difficulty eating
- ✓ Drooling saliva
- ✓ Loose or missing teeth



Gingivitis, or gum inflammation, is reversible and occurs when plaque and tartar accumulate on surface of the teeth. If left untreated, it will progress to an irreversible form of periodontal disease with early tooth loss. That is why it is so important to take your pet in for regular health and dental checks.

There is no one 'thing' that can prevent periodontal disease in your pet.

- There are diets available that can help to "clean" your pet's teeth, e.g. Hills T/D and Royal Canin Dental Diet. They work by encouraging your pet to chew on the hard biscuits helping to remove built up tartar and plaque.
- A combination of home care, e.g. tooth brushing and chew toys
- Veterinary care, e.g. professional dental cleaning, when it is needed.



If tartar has started to accumulate then a professional dental clean is the only way to eliminate it. For this purpose we have a modern ultrasonic descaler and polisher similar to one that you would find on a visit to your dentist.

---

#### **Free Dental Check on your Pet during May**

Just phone up the clinic to organize your **free dental check** over with a nurse  
Remember to bring this article in for your free Dental Check.



### **Are Your Calves Ready For The Grazier?**

The reproductive performance of replacement heifers is directly related to live weight at mating and calving. Calves and heifers must be reared to achieve live weight targets otherwise their first calving will be delayed, their live weight at calving will be too low and their fertility during their next mating period reduced. Well-grown heifers also produce more milk in their first lactation, have better fertility, compete better with mature cows and can survive longer in the milking herd than poorly grown animals.

Weigh the 6-8 year olds, as these cows will be at their mature live weight by this age. In spring calving herds, the best times to weigh them are in December-January or in April-May. At these times, BCS should be 4.0 to 5.0 and the unborn calf will not yet be having a great impact on live weight.

You should aim to have your heifers at 30% of this mature cow live weight at 6 months, 60% at 15 months and 90% at 22 months of age.

Make sure your calves graze abundant, high-quality pasture so that they are achieving their live weight targets. If not, feed good quality supplements until calves reach 200 kg. Remember that protein content and quality is important to ensure good skeletal and muscle development.

Having a worm management program working is also very important to achieve optimum growth in your young stock. Keep heifers away from areas irrigated or contaminated with effluent.

Are all the vaccinations up to date (clostridium and leptospirosis)?

Consider the need to supplement heifers with trace elements (copper, cobalt, selenium and zinc), vitamins and other feed additives. Protect your heifers from Facial Eczema during late summer and autumn with zinc dosing and supplementary feed options. Concentrations of cobalt in pastures are generally lower in the spring and summer and higher in the autumn and winter.

Also keep heifers away from poisonous plants, including tutu and bracken fern.

(Source: DairyNZ, incalf)



T 07 889 0414  
47 Lorne Street Morrinsville

0800 VISSERVETS (847 737)

F 07 889 0415

W [www.jbvissevets.co.nz](http://www.jbvissevets.co.nz)

E [jbvissevets@jbvis.co.nz](mailto:jbvissevets@jbvis.co.nz)

## NEWS FROM YOUR WAIKATO DISTRICT COUNCILLOR

A very successful meeting was held on 10<sup>th</sup> May to discuss the **Eureka Community Plan review** and **Long Term Plan Year Two** with a good turnout from the Eureka area. A committee has now been formed to review the Community Plan and their first meeting will be in early May. They will review the plan, taking in to consideration suggestions from residents, and then come back to the community with a draft plan for further consideration.

In last week's rural mail you should have received a **Summary of the Draft Annual Plan 2013 - 14 and Long Term Plan Year Two**. The summary contains - *An overview of the lower than budgeted general rate increase, NZTA funding reduction, new targeted rates proposed which include refuse, forestry, halls, water and wastewater; more money proposed for Annual Plan grant funds; changes proposed to fees and charges, law changes affecting council activities & services, and changes to development contributions.* Details are included on how to make a submission - this can be done on the form provided or on line. **Submissions close on 6<sup>th</sup> May at 4:00pm.** **Submissions received help influence the progress and future of your community so your input is important.**

The 2013 drought will have a long term effect on Council amenities, trees, roading etc. Council is being proactive in replanting trees and plants in their parks and reserves affected by the drought and have allocated funding specifically for this purpose. Roading, particularly on peat, has been badly affected in places. Peat soils shrink as they dry out and the excessive shrinkage caused by the drought has caused major cracking and subsidence on many of our roads. In the Eureka Ward the following roads are affected - Seddon and Holland, and, to a lesser extent, Waverley and Piako Roads. We are applying for further funding from NZTA to assist in paying for the reinstatement of these roads - Hauraki District Council was successful in the last drought in getting money from NZTA for this purpose so we hope this precedence will assist our case.

In 2012 Allan Turner, one of Council's Policy Planners, died of cancer. Allan worked for us for over 20 years and made a major contribution to planning Council's reserves and walkways etc. He was a keen and passionate advocate of developing walkways throughout the District. In May, to commemorate his contribution, a memorial service to remember Allan is being held on the future site of the **Allan Turner Walkway**. The walkway, once completed, will link Fuchsia Lane and Woodcock Road via a swing bridge and is currently at the design stage.

Last year I mentioned funding is available through the **Creative Communities Assessment Committee** and that their funding gives grants towards art, music, performing arts projects and the like. If you think your organization may meet their criteria contact the District Council for application details or download an application form from the WDC website. The committee generally meets twice a year, usually in April / May and October / November.

They recently met to consider applications and the following allocations were made:

Applicant	Amount \$	Purpose
Twin Rivers Arts Council Ngaruawahia	2,000	Winter Light Festival "Lights up the Point"
Twin Rivers Arts Council Ngaruawahia	1,000	Classes to teach weaving a wahakura
Raglan Community Arts Council	3,000	After school arts workshops for children
Raglan Community Arts Council	2,500	2013 Raglan Film Festival
Art @ the Port	570	"Soft Stone Sculpture" workshops
Newcastle Kindergarten	599.60	"Poi making" workshop
Rolande Paekau	1,500	Hip Hop Dance workshops
Linda Silvester - Word Café	3,500	Literary focus events workshops
Waikato Sculpture Trust	2,000	Re: fraction + Project costs
Graham Mackie - Huntly Youth Focus	1,420	Guitar classes
Let's Get Together Huntly	488.18	Matariki Kapahaka Concert and Stars
Total:	<b>\$18,577.78</b>	

**Rob McGuire - Councillor Eureka Ward**  
Ph. 824 3696 / fax 824 3645 / Mob 0274 970 966 / email [robmcguire@xtra.co.nz](mailto:robmcguire@xtra.co.nz)



## NEW HYBRID DAIRY SIRE TEAMS - REVIEW YOUR OPTIONS TO FIND SIGNIFICANT SAVINGS

A new development in 2013 is that all three main AB companies are all offering sire teams that are a hybrid mix of proven and unproven bulls. Given the current stresses on cash flow from the drought and other constraints on working capital, it makes sense to carefully review herd improvement expenditure.

The table below summarises the categories of AB sire products that are currently on offer separately, or more commonly this season are being offered in combination. It pays to carefully evaluate these options?

At this stage, two categories of AB sire have biases in their genetic ratings that are not dealt with in the current Animal Evaluation model.

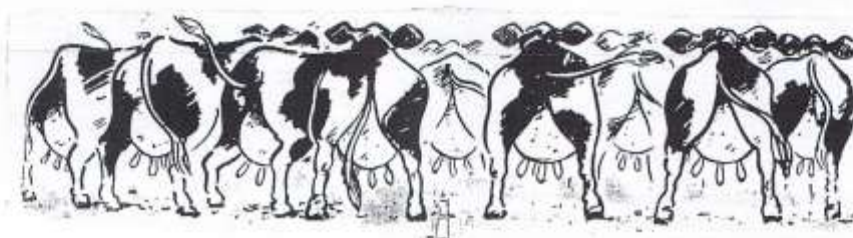
- First crop proven sires generally suffer from a reproof drop when they get a widespread proof. (\$10-15 is common). NZAEL is investigating this phenomenon.
- genomic selections are marketed based on in-house systems that are based on NZAEL sire data, but are not regulated by NZAEL. Four years of graduation results from these bull teams have demonstrated that there is usually serious inflation in the genomic estimates

The categories of bulls that are proving to be most stable are:

1. High reliability proven sires (200 plus daughters)
2. Teams of young sires selected based on ancestry data, to which NZAEL applies a standard adjustment to eliminate any systemic parent over estimation.

Liberty Genetics has enhanced its team offering to include a mix of these later options; approx 80% high merit young sires, with 20% of the team being higher reliability proven sires. The proven sires graduating from the Liberty Genetics model come through with high reliability due to big daughter numbers (average around 250 daughters), approximately three times more than competitor normal first crop proofs. "With the substantial number of daughters milking in larger scale commercial herds, we expect that the proofs should be very stable"; said Dr David Hayman, manager of the Sire Development program at Liberty Genetics.

"The farmers that set up Liberty Genetics, did so with the objective of delivering competitive genetic gain at a lower cost, and the business model has been fine tuned over the past 15 years." General Manager, Craig Hemmings highlights that; "All Dairy Farmers can benefit from the competitive pricing and the sound genetic strategy".





Semen Product= sire status	Factors to consider	Average BW bias
Reliable Proven sires	<ul style="list-style-type: none"> <li>85% plus reliability e.g. 200+ daughters and then multiple lactations</li> <li>Included in all NZAEL sire data outputs (RAS list etc)</li> </ul>	\$0
First crop proven sires	<ul style="list-style-type: none"> <li>Usually less than 120 production recorded daughters</li> <li>Depending on the sire proving system, vulnerable to the BW dropping with widespread proof</li> </ul>	Approx \$10-15 BW
Young sires selected on ancestry and genomic analysis	<ul style="list-style-type: none"> <li>BV and BW calculation is based on ancestry information plus genomic analysis of the DNA profile</li> <li>LIC and CRV each have their own genomic analysis platforms. gBW's are <u>not NZAEL ratified</u>.</li> <li>NZAEL produces normal BW estimates for these bulls but this is not usually shown in marketing material.</li> <li>Sold to the market for a premium price</li> </ul>	Approx \$20-25 gBW
Young sires selected on Ancestry	<ul style="list-style-type: none"> <li>BVs and BW are adjusted from ancestry by NZAEL applied factors to remove index inflation that is proven to come from over-evaluation of the top cows.</li> <li>The adjustment is approx -\$21 BW</li> <li>Available as a lower cost option for achieving genetic gain. Similar outcomes to the genomic selections.</li> </ul>	\$0

Table 1: Stages of Animal Evaluation for sires and factors to consider in comparing bull teams

For further enquiries contact Lin Buckley ph 8241768 or 0274732378

## Piako Toastmasters

Become the speaker you want to be

We meet at the Senior Citizens' Association Hall at 42 Canada Street, Morrinsville

7.45 pm, the 2nd and 4th Wednesday of each month  
Everybody welcome

Shape your words and your future

Find your voice in a relaxed environment

Contact Faye Dodunski on 889 3002 or Carol de Haas on 8897901  
for more information



## belles & brides



Hair - Makeup - Beauty Therapy

[www.bellesandbrides.co.nz](http://www.bellesandbrides.co.nz)

Ph (07) 8241852 or 0226717588

Belles & Brides is the Waikato's most comprehensive mobile beauty service. We offer a huge range of beauty services including amazing discounted pamper packages and at-home pamper parties!

Jump onto our website and visit our facebook page to see our upcoming events, current specials and our full range of services!



*Building Partnerships with Farmers*

**Our Services:**

- Maize & Grass Silage
- Full Cultivation
- Cartage - Truck and Tractor
- Hay, High Moisture Hay & Haylage
- Digger

**We Offer:**

- A Professional Service
- Experienced Drivers
- Quality Machinery



*Don't delay...  
book your job with us today!*

**(07) 824 1186**

mel@mcfarlanecontracting.co.nz

870 State Highway 26, Newstead  
R D 6, Hamilton



07889 0414

0800 VISSER



[jbvisservets@xtra.co.nz](mailto:jbvisservets@xtra.co.nz)

- See Us For All Your Animal Health Needs Including:
- \*Farm/In-Calf Consulting
  - \*Trace Elements
  - \*Dairy Management Advice (Cows & Goats)
  - \*Scanning Dairy Cows
  - \*Lame Cows
  - \*Animal Health Products (drench etc)
  - \*Soil & Pasture Analysis
  - \*Lifestyle Block Service (all animals)
  - \*Pet Consultation/Vaccination
  - \*Pet De-Sexing
  - \*Pet Nutrition
  - \*Pet Dental



SERVICING MORRINSVILLE, EAST HAMILTON, GORDONTON,  
ORINI, TE AROHA, TAUWHARE, TANGIHERA, RANGITONGA  
AND EVERYWHERE IN BETWEEN!

# Maurice Jackson

phone 027 271 6846

[jackson55@xtra.co.nz](mailto:jackson55@xtra.co.nz)



# MAK CONTRACTING LTD

Agriculture Contract Spraying For Urea and Eczema, Power Harrowing  
Experienced Rural And Lifestyle Block Fencer



# CTAS™



Specialists in:

- Professional Internet based systems development
- Web Site Development, Domains and Hosting
- TXT and Email Alerts and Reminders
- TXT Shortcodes for your business or club
- Flight Status by TXTing your Flight to 8808
- Live Video and Audio Streaming on the Internet

Phone: 07 824 1025  
Email: [grant@ctas.co.nz](mailto:grant@ctas.co.nz)



Go to [www.ctas.co.nz](http://www.ctas.co.nz) for more information



Associate Member of IT Professionals NZ



## Newstead Veterinary Services

161 Morrinsville Rd (SH26)

Phone (07) 856-4522 Fax (07) 8569487

email: [admin@newsteadvets.co.nz](mailto:admin@newsteadvets.co.nz)

[www.newsteadvets.co.nz](http://www.newsteadvets.co.nz)

We offer a comprehensive range of services for dogs, cats and small pets.

- Puppy pre-school classes
- Comprehensive range of pet care products and pet food
- Nutritional advice with onsite pet dietician and free weight clinic
- Cremation with a local pet crematorium, with optional return of ashes
- Isolation ward
- NZVA Microchipping Accredited Practice
- MAF Accredited vets for pet export certificates to Australia
- Ample parking

**We believe that pets are important members of your family.**

For your WOF and Service needs...  
For your Petrol and Farming needs...



Come see us...

## EUREKA MOTORS

1291 Morrinsville Rd, Eureka

07 824 1773

Hours: Mon-Fri 7:30am to 6pm

Sat 8am to 12 noon

**GOLDSEAL**  
Rustproof  
Specialists

### WALLING CONTRACTING LTD

'YOUR PROVEN LOCAL ONE STOP CONTRACTORS'

WE CAN OFFER YOU THE FOLLOWING SERVICES:



- \*Grass Silage
- \*Ploughing
- \*Rotary Hoeing
- \*Ripping
- \*Undersowing
- \*Baling & Wrapping
- \*Digger (12 Ton)
- \*Grass Crop Sales

- \*Maize Silage
- \*Power Harrowing
- \*Discing
- \*Maize Planting
- \*Roller Drilling
- \*Power Harrow/Seedbox
- \*Shavings & Sawdust
- \*Maize Crop Sales



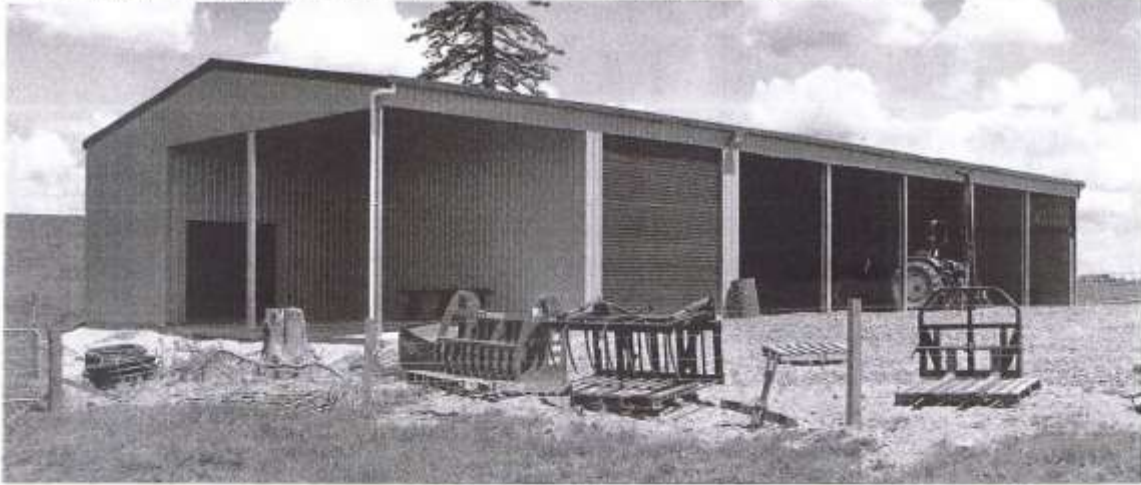
FOR ALL YOUR CONTRACTING NEEDS

PHONE LEN OR BECKY

ON

**824 0894** (anytime)

## LOCAL COMPANY, LOCAL PEOPLE, LOCAL SERVICE



## FULL DESIGN & BUILD OR KITSET ONLY OPTIONS



## FREE, NO OBLIGATION DESIGN & QUOTE SERVICE

If you need a shed that's built to last from top quality materials you can't go past our sheds. With heavy duty steel framing and Zincalume or Coloursteel cladding you will get the strength and durability that lighter steel and timber framed buildings simply can't compete with.

It's not enough too just have a great building system. You also need professional people with the knowledge & experience to deliver a great shed, done right. Being backed up by an international company means Waikato Shed Company is supported in their delivery of high quality building solutions. The end result is that you can have total confidence in the building design, construction process, & the people you are dealing with. It's the strength of our "chain" that is our advantage.

To discover the benefits of owning a Waikato Shed Company shed visit our website now.



Freephone **0800 555 147**  
218 Hunter Road, Eureka  
[www.waikatosheds.co.nz](http://www.waikatosheds.co.nz)

**WAIKATO SHED**  
**COMPANY**  
great sheds, done right!  
Hamilton • Taupo

# Now Is A Great Time To Add Value To Your Property With A New Shed

Waikato Shed Company offers a true custom design & build service that ensures you get the very best shed for your needs that is outstanding value for money. We listen to what you want because we understand that one size does not fit all. In fact in over 5 years we have never built the same shed twice.



## FULL DESIGN & BUILD OR KITSET ONLY OPTIONS

- American Barns
- Aircraft hangars
- Workshops & storage
- Stables & arenas
- Industrial buildings
- No set size restrictions
- All steel construction
- Clear span (no web trusses) up to 35m
- Up to 7m eave height
- Any length
- Integrated mezzanine floor
- Full range of cladding colours & choices



## FREE, NO OBLIGATION DESIGN & QUOTE SERVICE



Freephone **0800 555 147**  
218 Hunter Road, Eureka  
[www.waikatosheds.co.nz](http://www.waikatosheds.co.nz)

**WAIKATO SHED  
COMPANY**  
great sheds, done right!  
Hamilton • Taupo